

This modular rug for exterior and interior environments is created by joining loom woven strips with a width of 100 cm made of Twitape yarn. The geometric texture of the strips reminds of a traditional straw weave.

The strips are sawn lengthwise with Punto Zigzag; other seams are executed widthwise with Punto Zigzag as decoration of the rug's surface. They are positioned according to an alternated sequence in a pre-determined scheme.

The number of strips varies according to the dimensions of the rug.

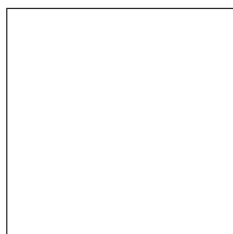
Tindari is finished with a fringe all along the perimeter.

Only one colour can be chosen.

ATTENTION:

The variants proposed below do not reproduce the weaving of Tindari rugs as they are valid as colour references only.

TND01



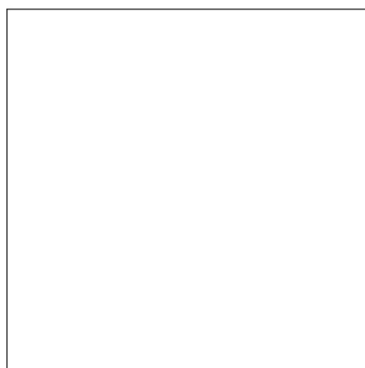
cm 200x200
79"x79"

TND03

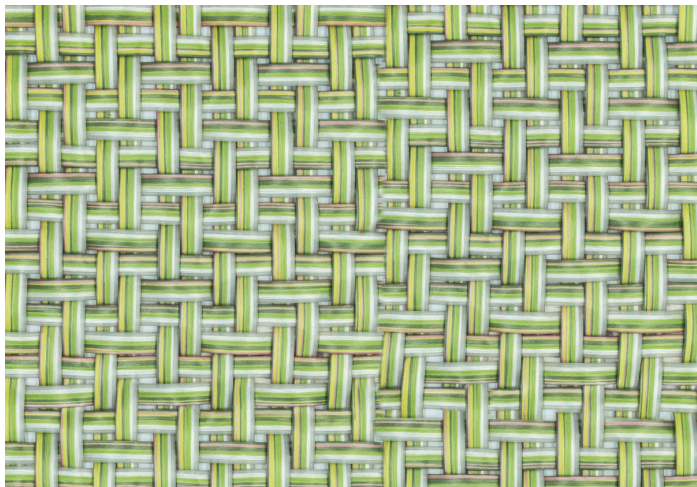


cm 200x300
79"x118"

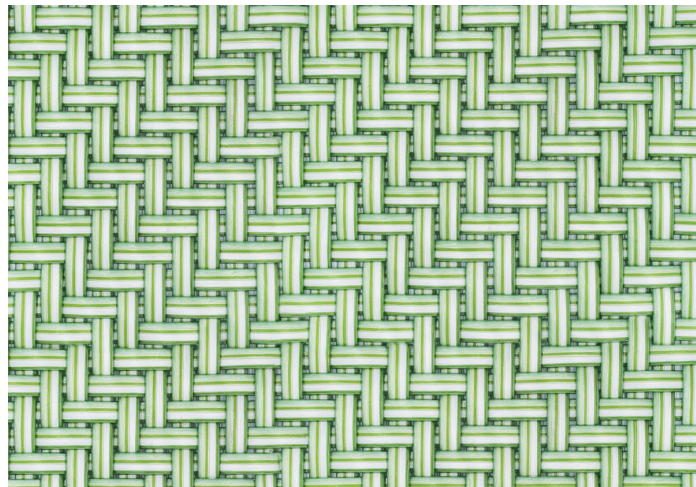
TND04



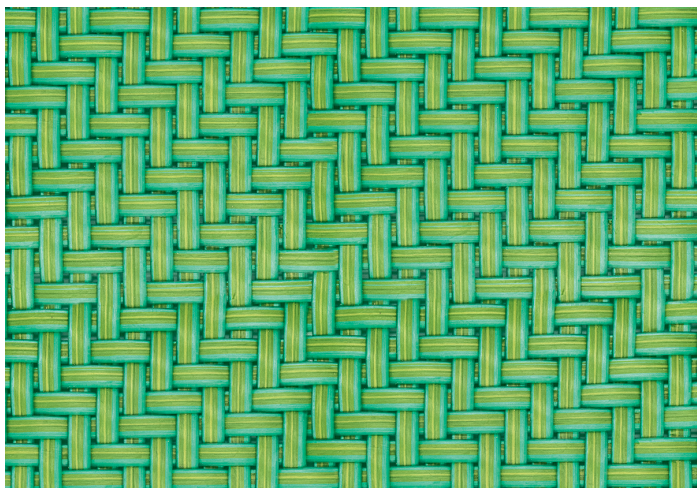
cm 300x300
118"x118"



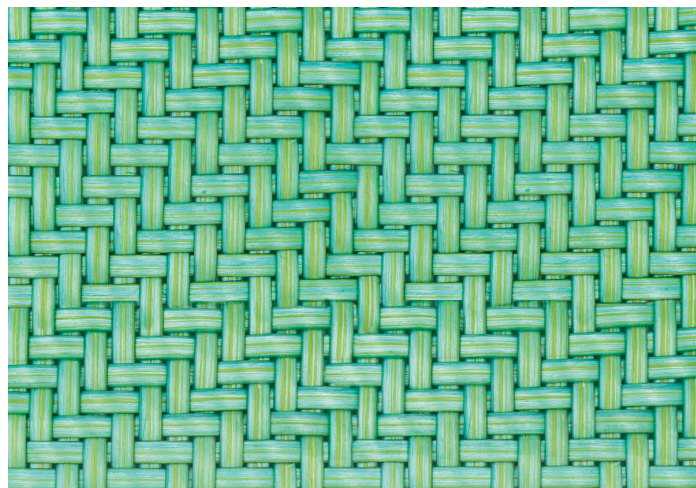
TP4021 - riferimento colore / colour reference



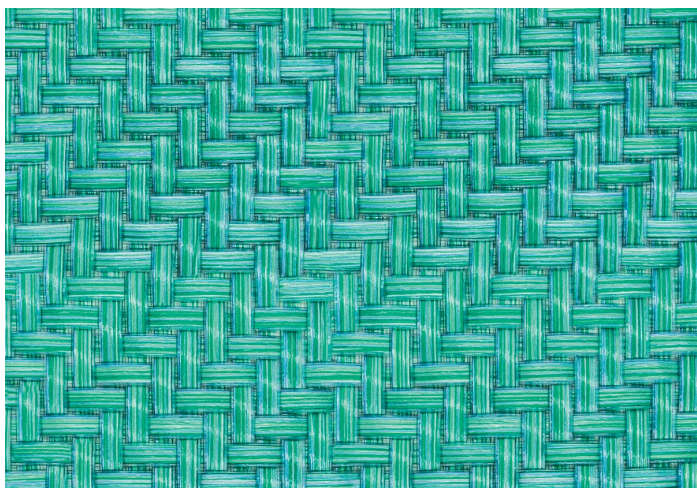
TP4022 - riferimento colore / colour reference



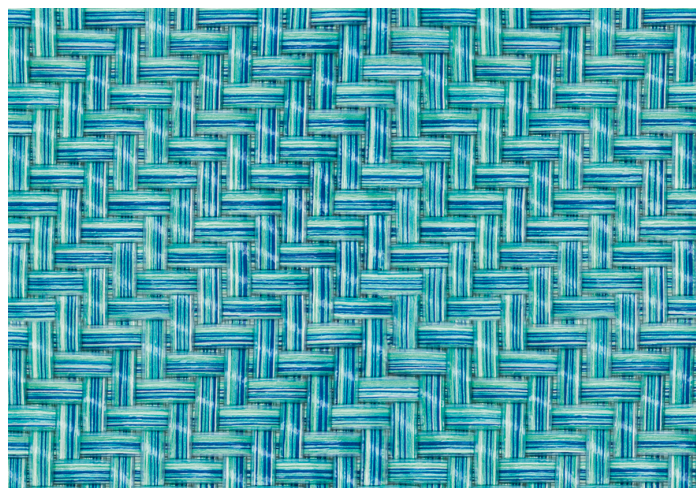
TP4034 - riferimento colore / colour reference



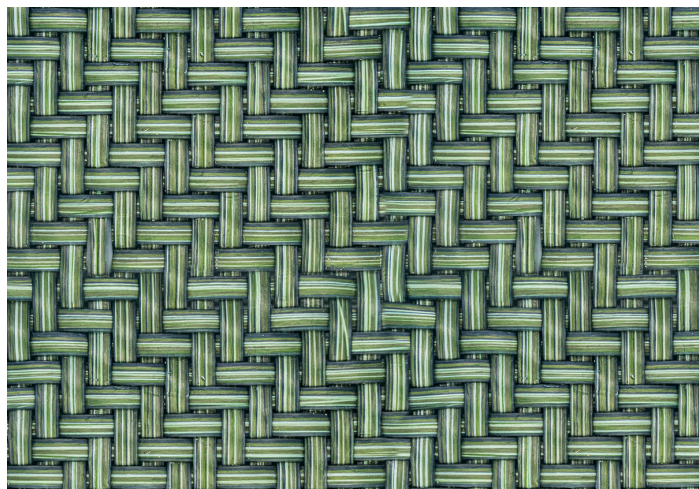
TP4023 - riferimento colore / colour reference



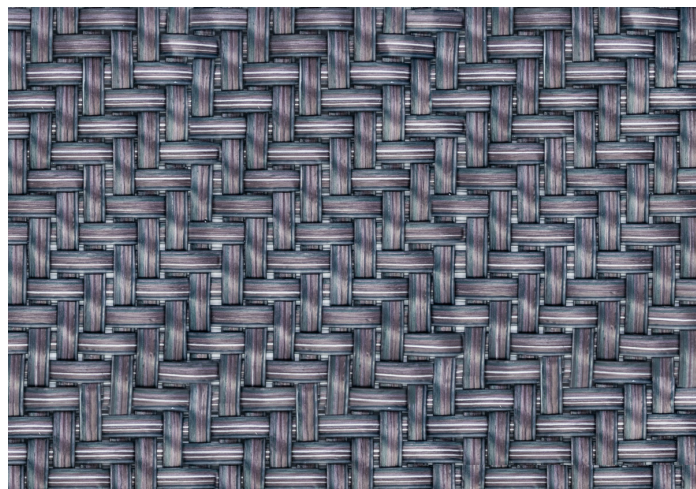
TP4036 - riferimento colore / colour reference



TP4035 - riferimento colore / colour reference



TP4019 - riferimento colore / colour reference



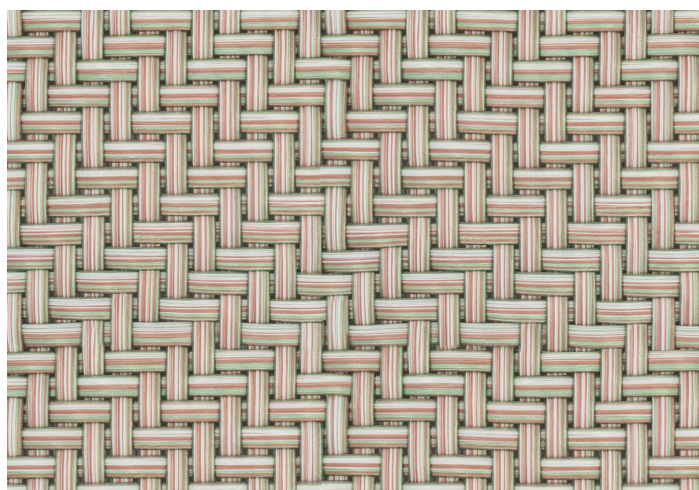
TP4029 - riferimento colore / colour reference



TP4018 - riferimento colore / colour reference



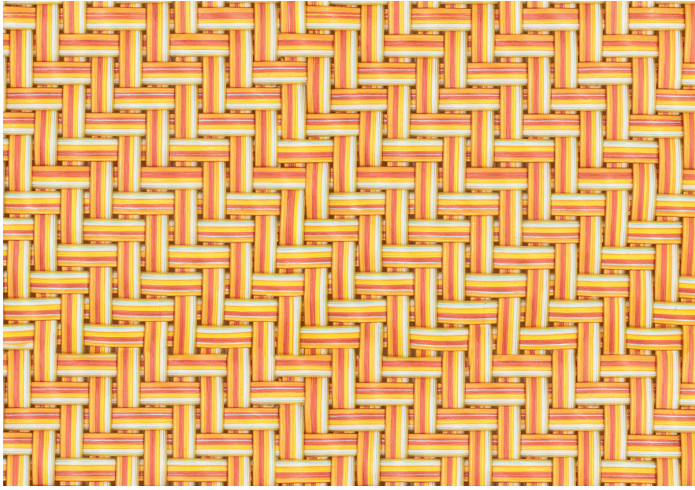
TP4030 - riferimento colore / colour reference



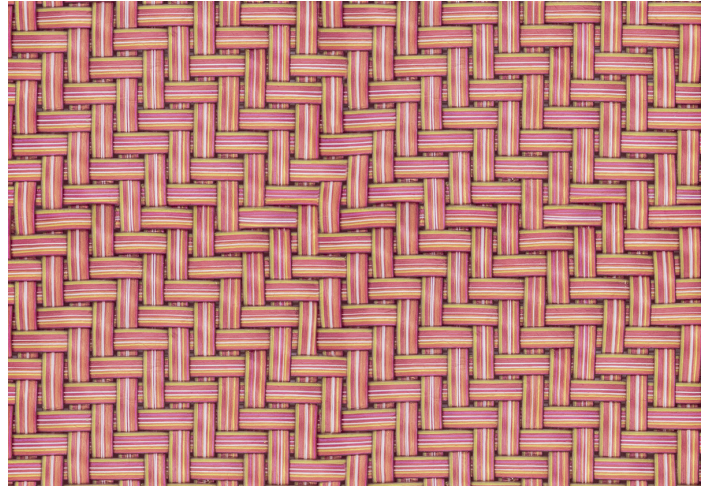
TP4033 - riferimento colore / colour reference



TP4028 - riferimento colore / colour reference



TP4027 - riferimento colore / colour reference



TP4026 - riferimento colore / colour reference