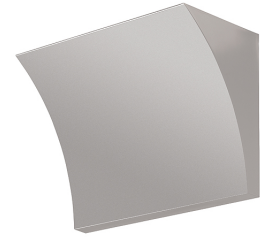


FLOS

POCHETTE

Mounting	: Wall
Lamps description	: 1 x MAX 160W R7s HDG
Environment	: Indoor
Finish	: Chrome, Grey, Shiny white
Technical description	: Wall lamp providing indirect light. Pressure die-cast Zamak alloy structure. Molded steel, galvanized white wall attachment containing the wall attachment system as well as the electrical devices. Pochette has a single dimmable light source in the traditional recessed series.



ELECTRICAL

Emergency	: Without
Voltage (V)	: 230

PHYSICAL

Supply	: Terminal block
Construction material	: Zamak
Weight (kg)	: 1.6
Minimum distance from illuminated object (mm)	: 800

Pochette
designed by Rodolfo Dordoni

Wall lamp providing indirect light

● F9700020	Grey
● F9700057	Chrome
● F9700009	Shiny white



IP
20

