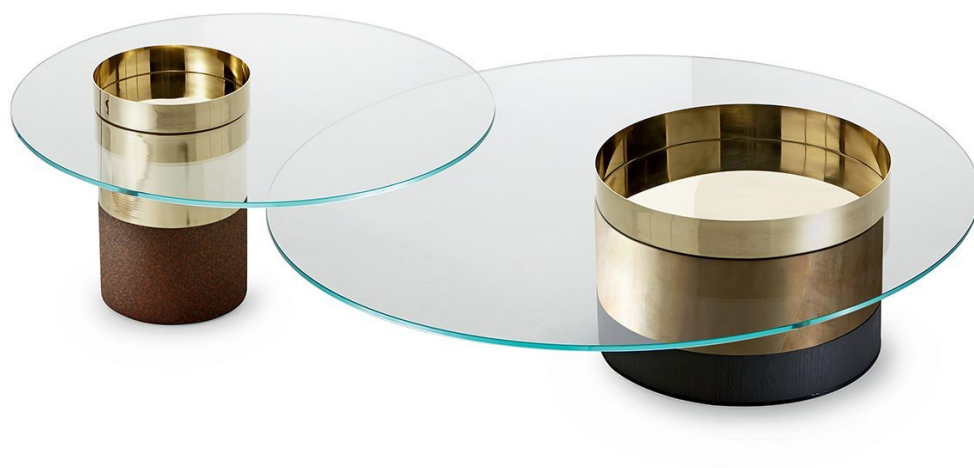

Haumea

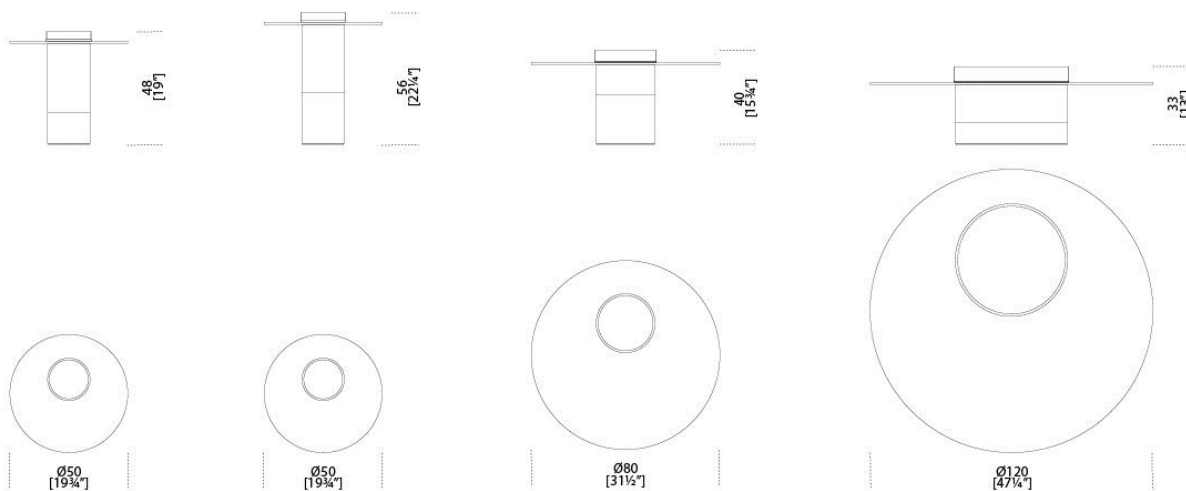
Massimo Castagna
2015

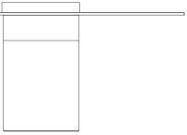




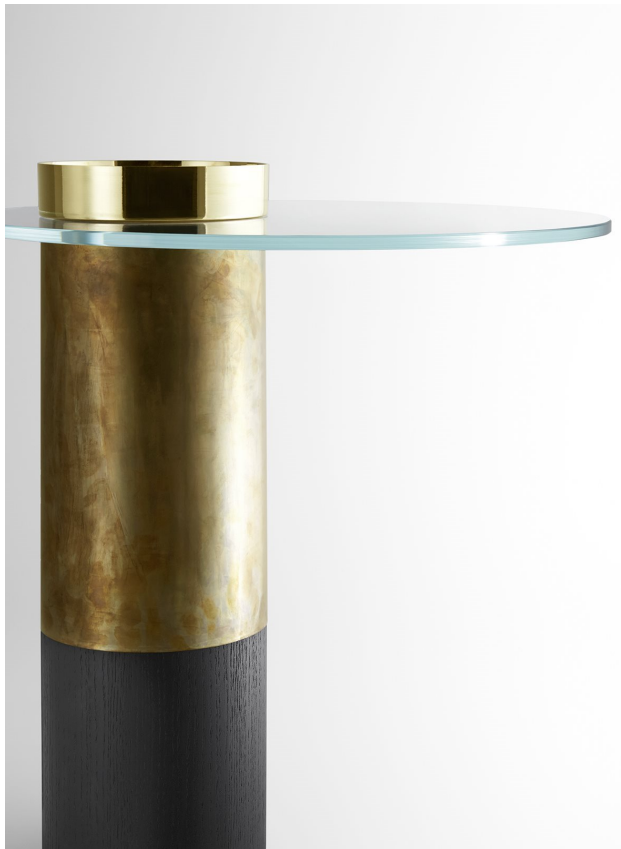
Tavolino con piano in cristallo extralight temperato 10mm. Base in legno laccato nero poro aperto o ruggine. Parti metalliche in ottone lucido, brunito a mano, ramato o cromo nero.

Coffee table with 10mm extralight tempered glass top. Black open pore or rust lacquered wooden base. Bright brass, hand burnished brass, coppered brass or black chromed metal parts.

Dimensioni / Sizes
Cm (Ø x H)
XS 50 x 48
S 50 x 56
M 80 x 40
L 120 x 33



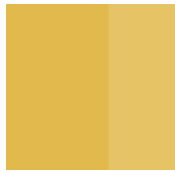
	A	B	C
<div style="display: flex; align-items: center;"> <div style="margin-right: 10px;"> <p>A</p> <p>B</p> </div>  </div>	Comb. 1 Ottone lucido Bright brass 	Comb. 1 Ottone brunito Burnished brass 	Comb. 1 Nero poro aperto Black open pore 
	Comb. 2 Ottone lucido Bright brass 	Comb. 2 Ottone lucido Bright brass 	Comb. 2 Ruggine Rust 
	Comb. 3 Ottone cromato nero Black chromed brass 	Comb. 3 Ottone cromato nero Black chromed brass 	Comb. 3 Nero poro aperto Black open pore 
	Comb. 4 Ottone cromato nero Black chromed brass 	Comb. 4 Ottone ramato Coppered brass 	Comb. 4 Ruggine Rust 
	Comb. 5 Ottone cromato nero Black chromed brass 	Comb. 5 Ottone brunito Burnished brass 	Comb. 5 Ruggine Rust 
	Comb. 6 Ottone cromato nero Black chromed brass 	Comb. 6 Ottone brunito Burnished brass 	Comb. 6 Nero poro aperto Black open pore 



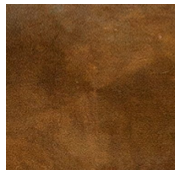
Metallo / Metal



Cromo nero
Black chrome



Ottone lucido
Bright brass



*Ottone brunito
a mano*
*Hand
burnished
brass*



Ottone ramato
Coppered brass

Legno / Wood



*Nero poro
aperto (Layer)*
*Black open pore
(Layer)*



Ruggine
Rust

Cristallo / Glass



Extralight
Extralight
