

Slow Chair

vitra.

Ronan & Erwan Bouroullec, 2006



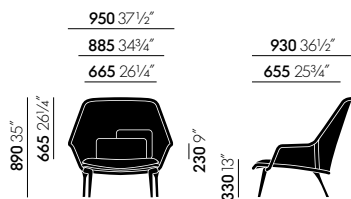
Ronan and Erwan Bouroullec created this expansive armchair by using an extremely strong, precisely shaped knit which is stretched over the metal frame like a fitted stocking. Thanks to the knit sling cover, the Slow Chair combines soft comfort with ergonomic support, which is further enhanced by thin seat and back cushions.

The translucent sling cover replaces the thick cushions of traditional armchairs,

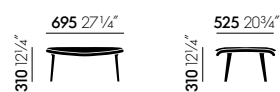
resulting in a design that is lightweight, yet generously proportioned. In the living room or on a sun porch, the Slow Chair maintains an understated presence while offering superb comfort.

- **Frame/Cover:** tubular steel frame with extremely strong, precisely shaped knitted fabric which is stretched over the frame.
- **Upholstery:** polyurethane foam and polyester fibre, including a seat cushion and two backrest cushions.
- **Seat height:** 330 mm (applied load 230 mm, measured in accordance with EN 1335-1).
- **Base:** die-cast aluminium legs with polished or powder-coated finish.
- **Glides:** all legs fitted with hard glides for carpet; felt glides optionally available for hard floors.
- **Applications:** recommended for home use only.

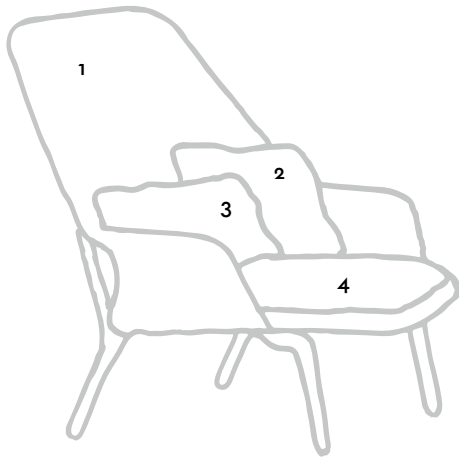
DIMENSIONS



Slow Chair



Slow Chair Ottoman



Slow Chair - red/cream



Tricot - red/cream



Tonus - moss-green



09 Laser - green

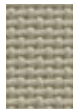


Coda - cream

Slow Chair - brown/cream



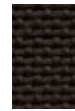
Tricot - brown/cream



03 Panamone - moss grey

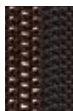


09 Laser - green



02 Panamone - dark brown

Slow Chair - brown



Tricot - brown



Intreccio - anthracite



Tonus - moss-green



13 Aura - blackberry

Slow Chair - black



Tricot - black



Intreccio - anthracite



Tonus - moss-green



04 Laser - black

Slow Chair - blue/green



Tricot - blue/green



77 Hopsak - nero/forest



04 Twill - ink blue



22 Laser - dark blue/forest

03 aluminium polished

40 chocolate powder-coated (smooth)

Base

