

# Petit Repos

Antonio Citterio, 2013

**vitra.**



## Petit Repos

Petit Repos adds a low lounge chair to the family of chairs by Antonio Citterio. Like the Grand Repos and Repos lounge chairs, it is distinguished by its high-quality materials, outstanding comfort and contemporary design. Petit Repos has an integrated flexible back connection, allowing the sitter to lean back and sink into the chair for even more comfort.

The dignified club chair cuts a fine figure in public spaces as well as in the home. For both areas of use, covers are available in a range of different materials.

### Materials

- **Chair/body:** moulded polyurethane foam with plastic frame.
- **Seat heights:** 405 mm (330 mm with applied load, measured in accordance with EN 1335-1) or 445 mm (370 mm with applied load, measured in accordance with EN 1335-1).
- **Base:** four-star swivel base in die-cast aluminium, polished or powder-coated finish.

## DIMENSIONS



## Petit Repos



**03**  
aluminium polished



**69**  
chestnut powder-coated (smooth)



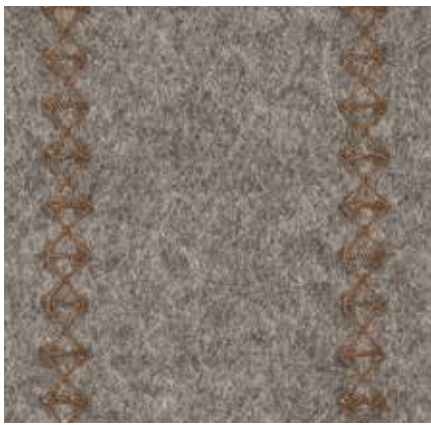
**30**  
basic dark powder-coated (smooth)

**Base**

.....

# Cosy 2 Home/Office, F8o

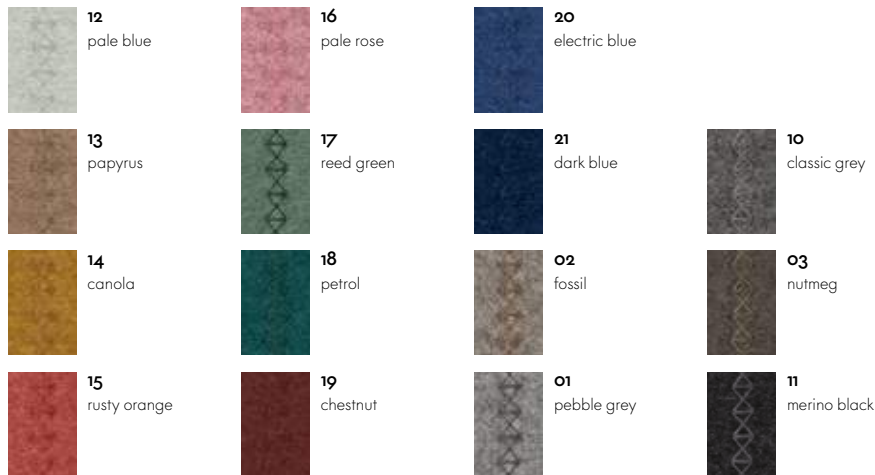
**vitra.**



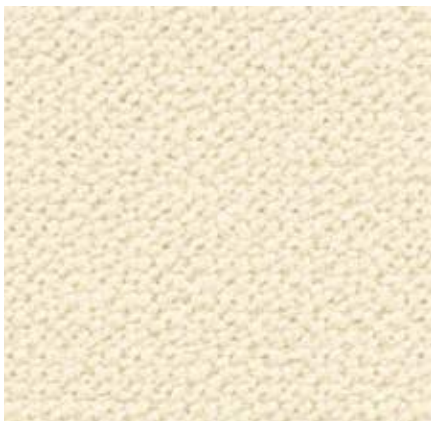
Cosy 2 is a high-quality milled woollen cloth with a warm character. The lively melange yarn emphasises the fabric's natural colours – from delicate shades to vibrant hues – and gains added elegance with colour-coordinated stitching. The fabric offers thermal comfort and excellent durability, making it suited for upholstered furniture in office settings as well as residential applications.

Cosy 2 is available in 15 colours.

Material	20% polyamide, 80% new wool
Weight	590 g/m <sup>2</sup> (17.4 oz/y <sup>2</sup> )
Width	154 cm +/- 2 cm (60")
Abrasion resistance	50,000 Martindale
Fastness to light	Type 6
Pilling	Grade 4-5
Fastness to rubbing	Grade 4-5 dry and wet



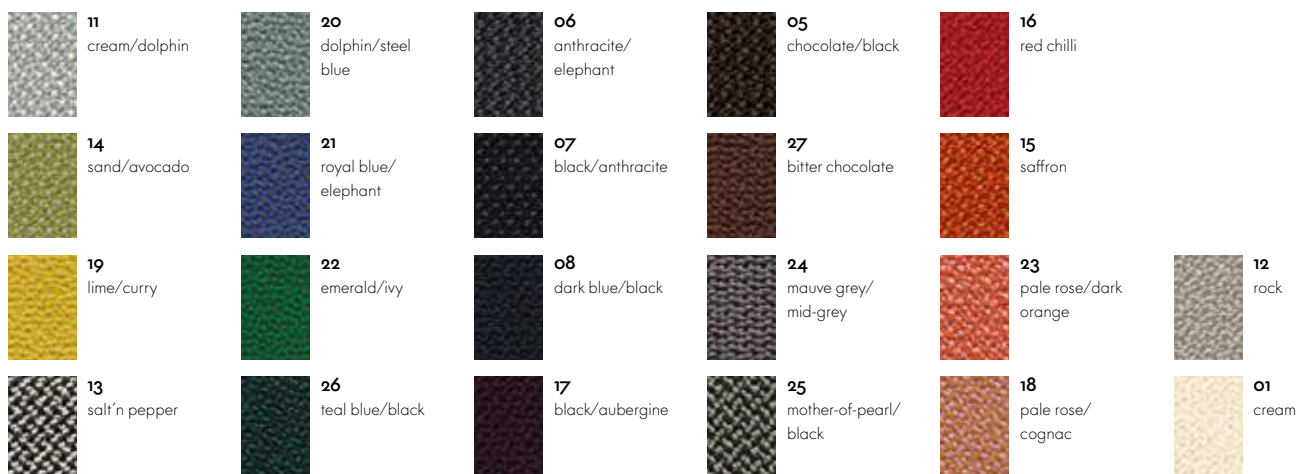
# Credo Home/Office, F12o



Credo is a durable woollen fabric made of premium worsted yarn with a pleasant feel. The two- and three-tone colours give this fabric a characteristic structure and vibrant appearance. Credo allows for an effective exchange of heat to ensure comfortable thermal conditions for the sitter. The fabric can also be used in office environments.

Credo is available in 22 colours.

Material	5% polyamide, 95% new wool
Weight	640 g/m <sup>2</sup> (18.9 oz/y <sup>2</sup> )
Width	145 cm +/- 2 cm (57")
Abrasion resistance	100,000 Martindale
Fastness to light	Type 6
Pilling	Grade 4
Fastness to rubbing	Grade 4-5 dry and wet



# Dumet Home, F8o

**vitra.**



Dumet is a cotton blend in a plain weave with a lively appearance. The natural mixed tones create an elegant look with an Italian flair. Dumet is soft and cool to the touch.

Dumet is available in 20 colours.

Material	9% polyamide, 46% cotton, 8% linen, 22% wool, 15% rayon
Weight	485 g/m <sup>2</sup> (14.3 oz/y <sup>2</sup> )
Width	147 cm +/- 2 cm (57")
Abrasion resistance	40,000 Martindale
Fastness to light	Type 5
Pilling	Grade 3-4
Fastness to rubbing	Grade 3-4 dry and wet



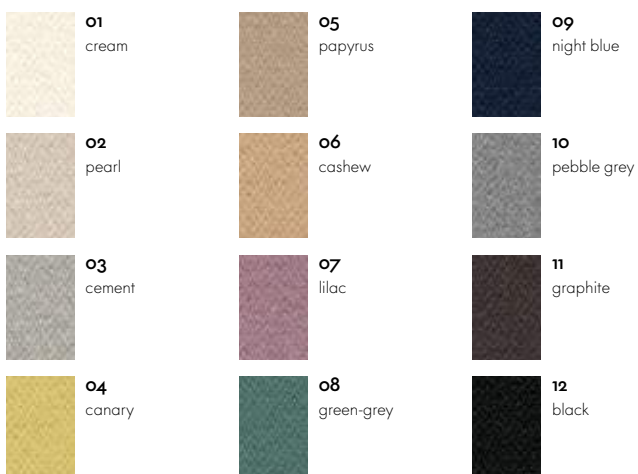
# Mello Home, F4o



Mello is an elegant cotton fabric with a pleasant softness and cool tactile qualities. Thanks to a thicker melange yarn of recycled cotton, the robust twill weave has a lively yet balanced appearance. The understated colour palette for Mello ranges from pastel tones to natural, earthy shades and darker hues.

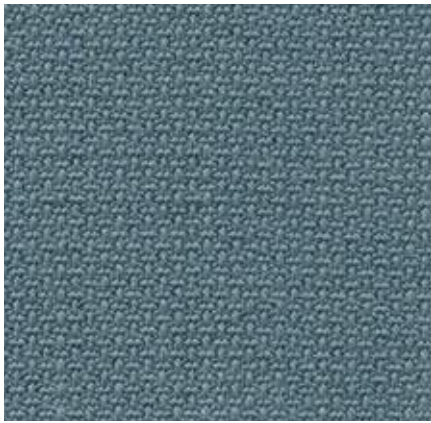
Mello is available in 12 colours.

Material	80% cotton, 20% polyester
Weight	530 g/m <sup>2</sup> (15.6 oz/y <sup>2</sup> )
Width	142 cm +/- 2 cm (56")
Abrasion resistance	30,000 Martindale
Fastness to light	Type 5
Pilling	Grade 4
Fastness to rubbing	Grade 3-4 dry and wet



# Volo Home/Office, F6o

**vitra.**



Volo is a finely structured wool blend with a refined weave that gives it an elegant appearance. This expressive textile shows strong solid colours to full advantage while simultaneously offering pleasant tactile qualities. With its soft look and appealing texture, Volo is a perfect fit for home interiors, but it is also well suited for use in the contract sector.

Volo is available in 17 colours.

Material	15% polyamide, 85% new wool
Weight	435 g/m <sup>2</sup> (12.8 oz/y <sup>2</sup> )
Width	145 cm +/- 3 cm (57")
Abrasion resistance	100,000 Martindale
Fastness to light	Type 6
Pilling	Grade 4-5
Fastness to rubbing	Grade 4-5 dry and wet



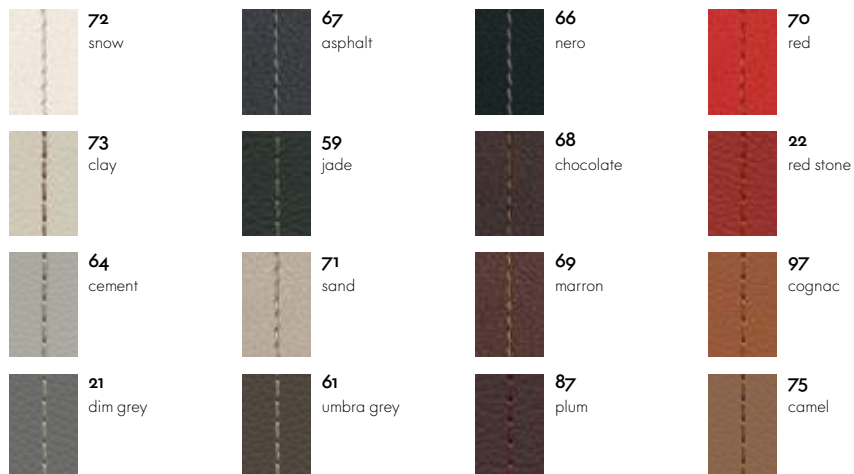
## Leather Home/Office, L20



The standard grade leather used by Vitra is a robust cowhide leather, dyed-through, pigmented and embossed with an even grain pattern. Since it is hard-wearing and easy to maintain, it can also be used in office environments.

Leather is available in 16 colours.

Material	Robust cowhide with a distinctive, even grain
Fastness to light	Type 6
Thickness	1.1–1.3 mm
Fastness to rubbing	Grade 4 dry and wet

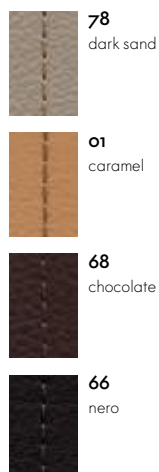


## Leather Natural Home, L60



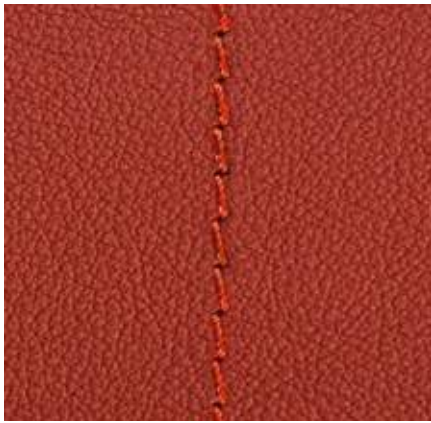
Leather Natural is a very soft cowhide leather; the untreated grain gives it a very natural appearance. It is porous, breathable and warm to the touch. Through use, it takes on a lively, characteristic patina. It is available in 4 colours.

Material	Aniline cowhide nappa leather with an open-pored texture and natural grain
Fastness to light	Type 3
Thickness	1.3–1.5 mm



# Leather Premium Home/Office, L40

**vitra.**



Leather Premium is a relatively smooth cowhide leather with a flat grain and fine top sheen. It is dyed-through and lightly pigmented. The semi-aniline leather is soft to the touch and available in 22 colours.

Material Semi-aniline nappa leather with a very soft and supple feel

Fastness to light Type 5

Thickness 1.1–1.3 mm  
Fastness to rubbing Grade 4 dry and wet



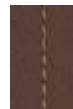
**72**  
snow



**59**  
jade



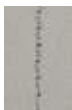
**66**  
nero



**69**  
marron



**74**  
olive



**64**  
cement



**58**  
khaki



**77**  
brown



**93**  
brandy



**75**  
camel



**65**  
granite



**61**  
umbra grey



**68**  
chocolate



**22**  
red stone



**62**  
ochre



**71**  
sand



**60**  
smoke blue



**67**  
asphalt



**87**  
plum



**97**  
cognac



**63**  
cashew



**73**  
clay

