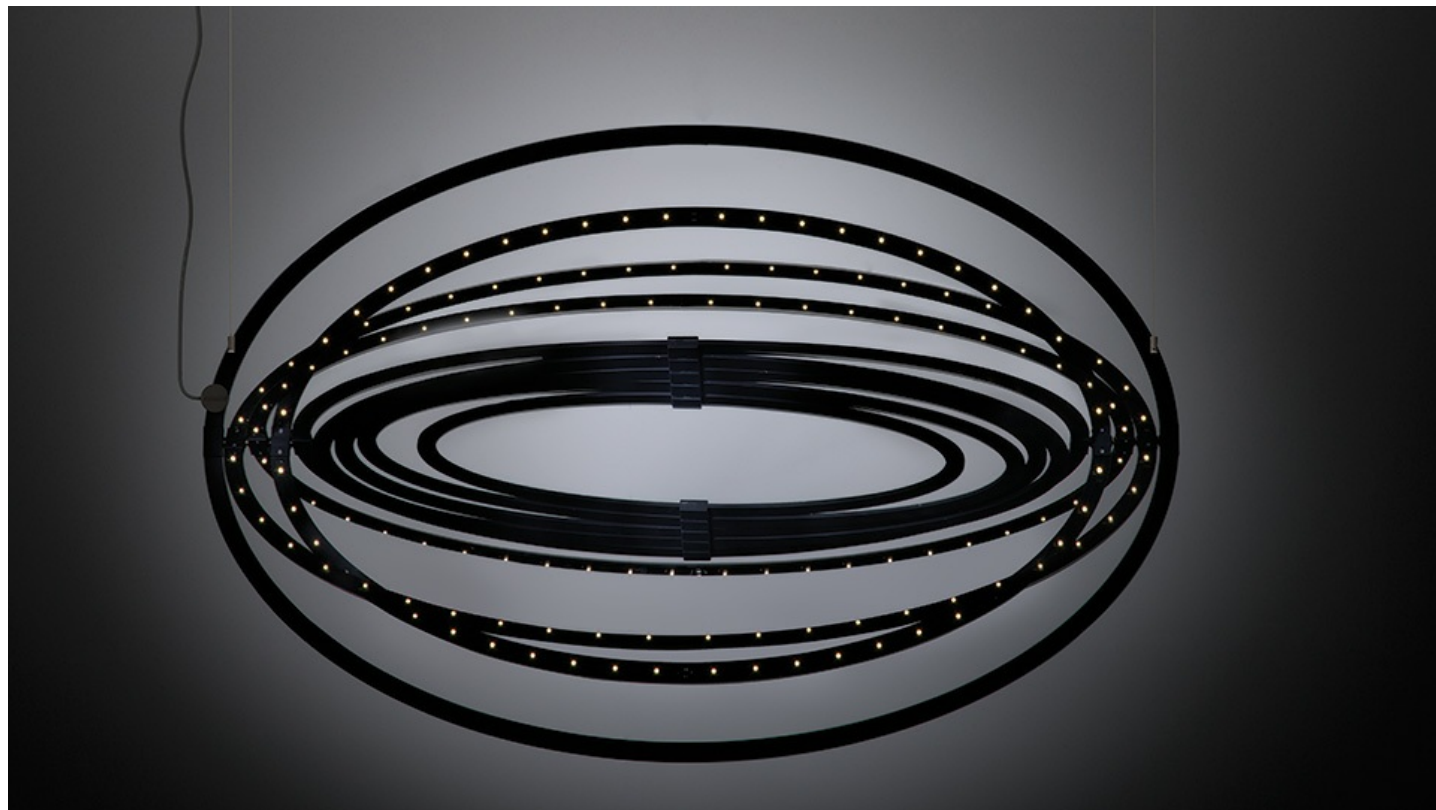


PRODUCT DATA SHEET

Copernico sospensione



Suspension lamp, coordinated with the wall lamp model. Nine concentric mobile ellipses obtained from a single aluminium plate support a circuit of 384 white LEDs; the ellipses rotate independently on two different axes, enabling the light emission to be directed and numerous spatial configurations to be obtained at the same time. When the device is closed it is completely flat.

Metal
Black



Metal Grey



LED Suspension





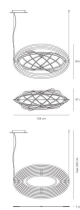
 N/A° IP20



W	Dimensions	Luminous Flux (lm)	Color	Code	Product name
38W	41x104 cm	2565lm	●	1623020A	Copernico - Black
			●	1623010A	Copernico - Aluminium



360°

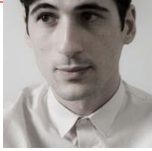


Designers

Projects



› Carlotta de Bevilacqua



› Paolo Dell'Elce



› Valestra
Showroom



› Axa
Headquarters